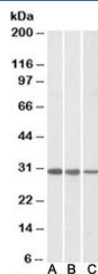


CAPZB Antibody [beta 2 form specific] (R34781)

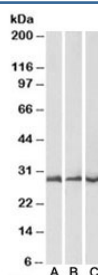
Catalog No.	Formulation	Size
R34781-100UG	0.5 mg/ml in 1X TBS, pH7.3, with 0.5% BSA (US sourced) and 0.02% sodium azide	100 ug

[Bulk quote request](#)

Availability	1-3 business days
Species Reactivity	Human, Mouse, Rat, Pig
Predicted Reactivity	Cow, Dog
Format	Antigen affinity purified
Host	Goat
Clonality	Polyclonal (goat origin)
Isotype	Goat Ig
Purity	Antigen affinity
Gene ID	832
Applications	Western Blot : 0.5-2ug/ml ELISA (peptide) LOD : 1:32000
Limitations	This CAPZB antibody is available for research use only.



Western blot of human Jurkat (A), HeLa (B) and mouse NIH3T3 (C) lysates with CAPZB antibody at 0.01ug/ml. Predicted molecular weight: ~30kDa.



Western blot testing of mouse [A], rat [B] and pig [C] heart lysates with CAPZB antibody at 0.1ug/ml. Predicted molecular weight: ~30kDa.

Description

Additional name(s) for this target protein: Capping protein (actin filament) muscle Z-line, beta; CAPZB

Application Notes

Optimal dilution of the CAPZB antibody should be determined by the researcher.

1. This CAPZB antibody is specific for the beta 2 form found in non-muscle cells. It will not detect the beta 1 form.

Immunogen

Amino acids NDLVEALKRKQQC were used as the immunogen for this CAPZB antibody. (1)

Storage

Aliquot and store the CAPZB antibody at -20oC.